

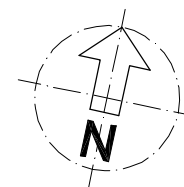
B

ZÜRICH-SEEBACH

BIRCHSTR. 630-644 (BLOCK IV)

BESTANDESPLAN EG

MST. 1:100 GEZ:DKR DATUM: 10.12.2001

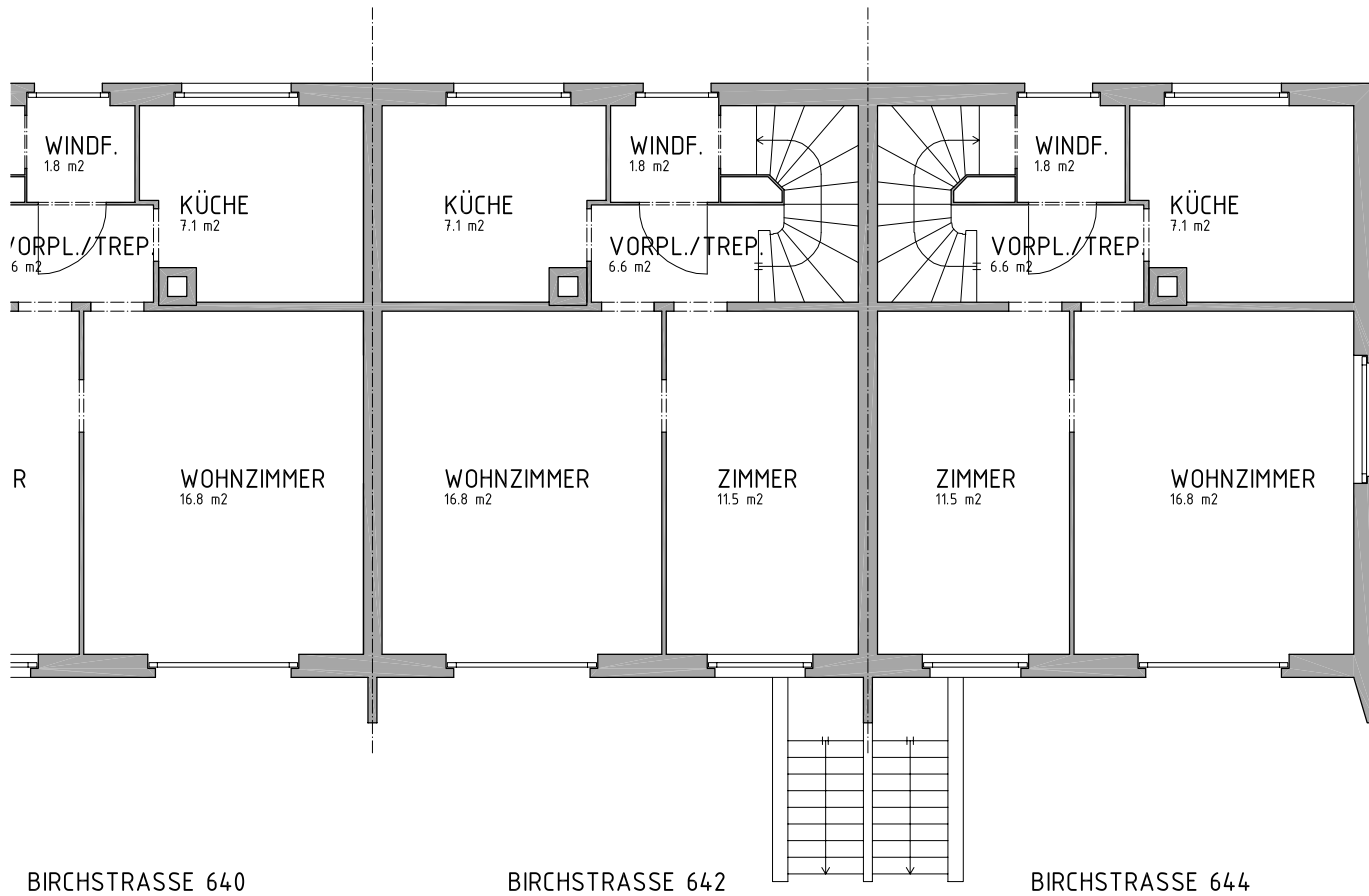


tk3 Architecture.Consulting.Engineering.

4 ZI REFH
89m²

4 ZI REFH
89m²

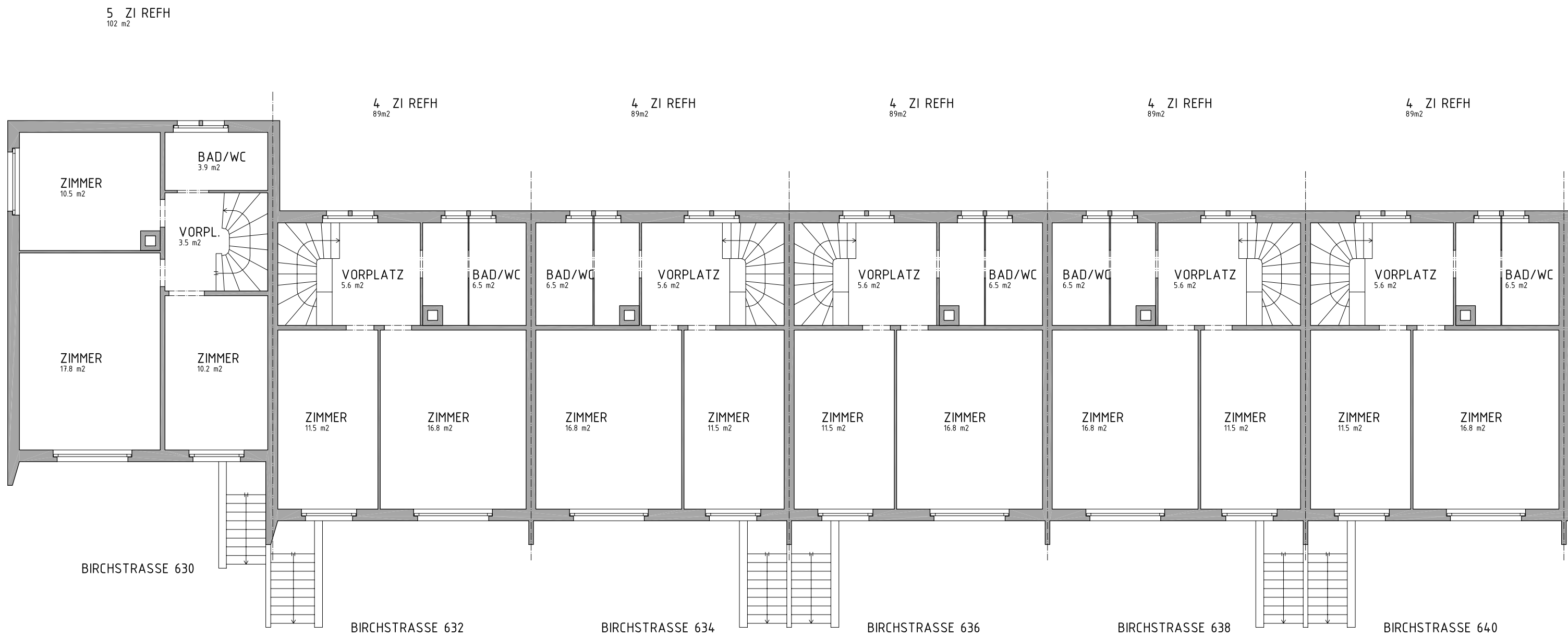
4 ZI REFH
89m²



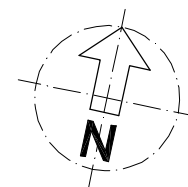
BIRCHSTRASSE 640

BIRCHSTRASSE 642

BIRCHSTRASSE 644



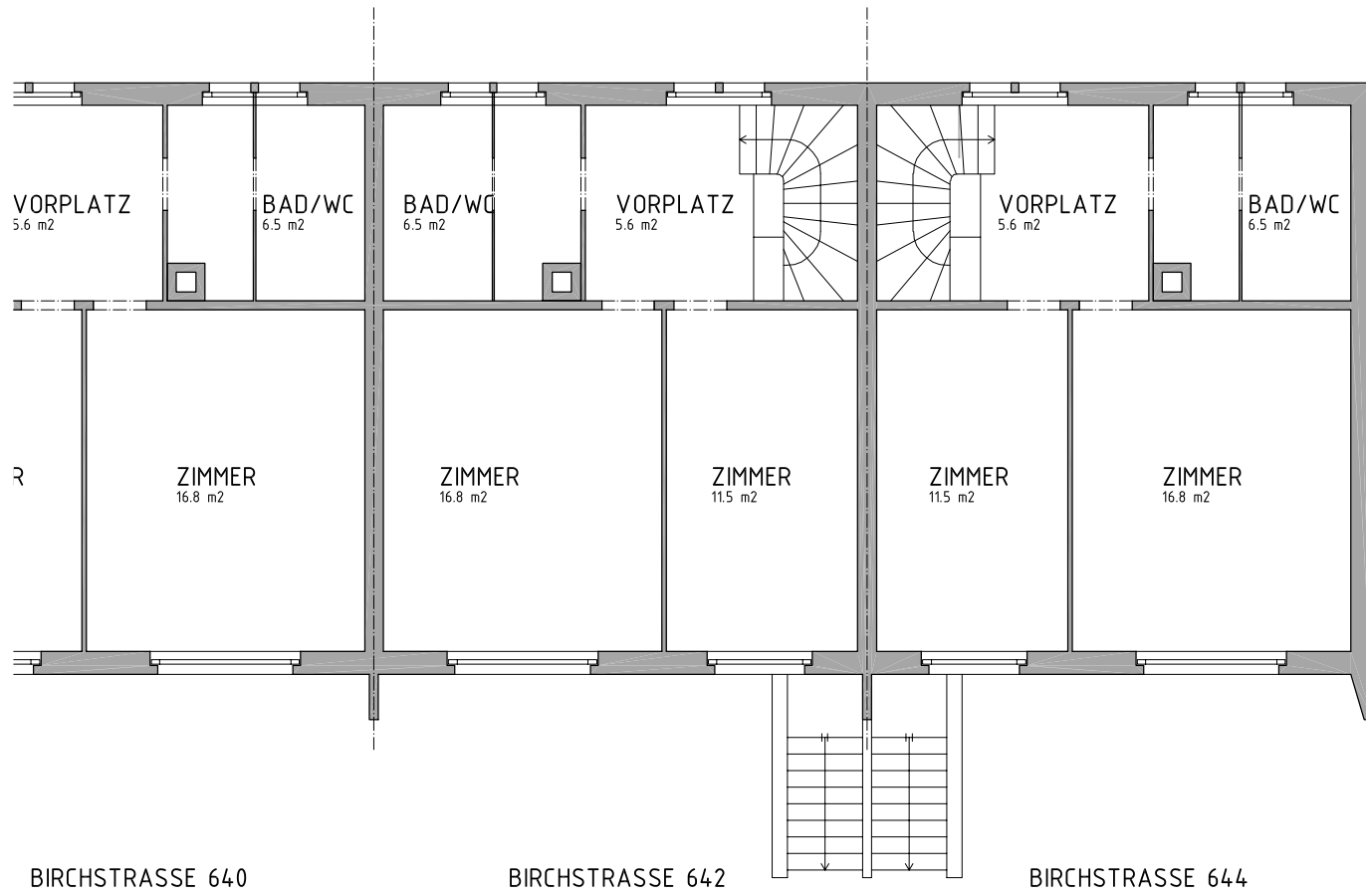
B ZÜRICH-SEEBACH
 BIRCHSTR. 630-644 (BLOCK IV)
 BESTANDESPLAN 1.0G
 MST. 1:100 GEZ:DKR DATUM: 10.12.2001



4 ZI REFH
89m²

4 ZI REFH
89m²

4 ZI REFH
89m²



R

ZIMMER
16.8 m²

ZIMMER
16.8 m²

ZIMMER
11.5 m²

ZIMMER
11.5 m²

ZIMMER
16.8 m²

BIRCHSTRASSE 640

BIRCHSTRASSE 642

BIRCHSTRASSE 644