

4 ZI WHG
72 m²

3 ZI WHG
61 m²

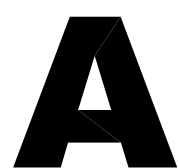
3 ZI WHG
61 m²

4 ZI WHG
72 m²



BIRCHSTRASSE 664 / 699
GLATTALSTRASSE 85

BIRCHSTRASSE 666 / 667
GLATTALSTRASSE 83

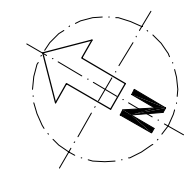


ZÜRICH-SEEBACH

BIRCHSTR. 667-669/664-666, GLATTALSTR. 83-85 (BLOCK VI+VII+IX)

BESTANDESPLAN EG

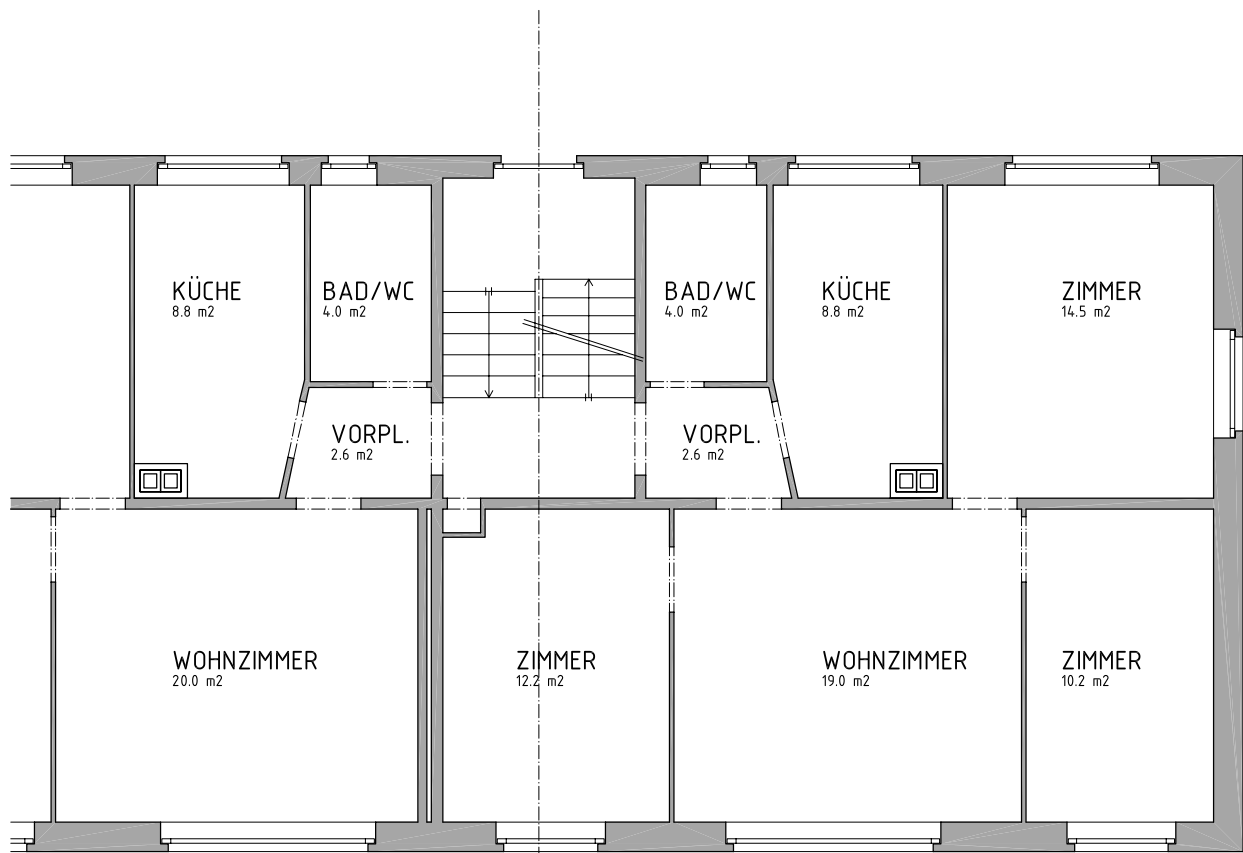
MST. 1:100 GEZ:DKR DATUM: 10.12.2001



tk3 Architecture.Consulting.Engineering.

3 ZI WHG
61 m²

4 ZI WHG
72 m²



GLATTALSTRASSE 91